

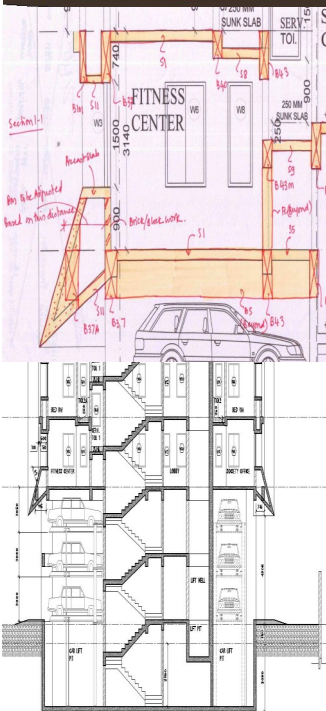


About Facilities



Excelize's teams work with state-of-the-art infrastructure which includes the latest technology and equipment:

- Audio and Video conferencing
- High-end computer workstations
- High-end servers (Xeon-based)
- Large-scale printers and plotters
- High-quality scanners
- High-speed internet connectivity (dedicated leased line at 2 MBps)
- Robust networking infrastructure with high-speed Cisco routers and switches
- Network security (firewalls and proxy servers)
- 24x7 monitoring backed by built-in IT redundancies
- 17 KVA power backup with an online UPS and diesel generators
- VoIP telephony
- Secure, guarded premises



Excelize Newsletter

August 2010

Happy Independence Day!

We are proud of our nation and on this independence day let us take an oath. Here is a quote which will help to make our oath more powerful and worthy to be proud of.

"So far as I am able to judge, nothing has been left undone, either by man or nature, to make India the most extraordinary country that the sun visits on his rounds. Nothing seems to have been forgotten, nothing overlooked." -- Mark Twain

Now, once again its our turn to make the nation proud of its Infrastructure.

Pratap Dhopte
CMD Excelize
Email: pratap.dhopte@excelize.com



On Going Projects:

Residential Project

This residential township at Pune is a high-end Eco-housing project. The project consists of 10 buildings of 7 floors + basement parking.

Excelize's role on this project is to coordinate with all the consultants and generate a set of coordinated GFCs drawings. This set of drawings also includes structural shuttering drawings. These shuttering drawings are the sole drawings that are used on site for execution of RCC frame structure of every floor. This drawing is very important when speed of construction is to be achieved.

Revit in use for Seasons Hotel , Pune

This is a multi use building having retail shopping plaza at lower 3 floors and a 3-Star hotel on 5 floors above. Being a mixed use type building this project had complex services on all floors.

Purpose of the Revit modelling was to identify clashes between architectural, structural & MEPF elements. Excelize created custom families for almost all equipments by referring to the product specifications from the manufacturers. Electrical conduiting and cable trays were shown with all relevant manufacturer details.

Excelize is involved on this project as a, work share partner to provide 'Design Management Services (DMS)' and also generate a set of GFC.

Residential Tower

This residential tower in Mumbai with an area of approximately 35, 000 sq.ft is spread over 20 floors. The Ground Floor has stacked car parking, where as First Floor has Fitness Center, Society Office, Meter Room etc. The Residential Flats are from 2nd to 20th Floor. Excelize has provided design management services for this project and also generated the set of GFC.

Design News:

Designers seek entry into India Inc's boardroom There's little in Manoj Kothari's appearance to suggest the wildly creative nature of his profession. The relaxed formal attire and well-trimmed look point towards a serious business professional. And when he uses terms like "brand architecture" and "perceptual mapping" it's easy to think of him as a branding guru or a market researcher. But Kothari is actually a designer. A designer with a difference. [More.....](#)

Benefits of BIM

Benefits of BIM a wiki site which gives category wise listing of benefits to individuals like Planners, Designers, Owners, Contractors, Occupants and many more [More.....](#)

Upcoming events:

1. To get up coming events for August [More.....](#)
2. List of Trade Shows in August [More.....](#)
3. New air Quality Standards : environmental pollution remains a serious issue in the developing world, affecting the lives of billion people, reducing their life expectancy, and damaging children's growth and development. The Government has recently revised the National Ambient Air Quality Standards (NAAQS) and limits for 12 pollutants have been notified. Area classification based on land use has been done away with so that industrial areas have to conform to the same standards as those for residential areas [More.....](#)

Please let us know if you would prefer not to be contacted regarding this information, send e-mail to opt-out@excelize.com and you will not receive any further e-mails from the sender.

Contact us:

Excelize Architectural Services Pvt. Ltd.

Block # 11 & 12, Electronic Sada n, Software Technology Park, MIDC, Chikalthana Aurangabad 431210. Phone (240) 2472191

sales@excelize.com